

Pitched roof mounting system

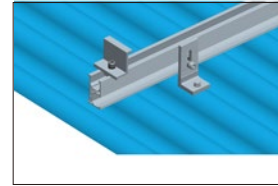
Solid, versatile for all pitched roofs

- Offer perfect solutions regardless of the roofing type and substructure of the roof.
- Compliance with Australian and other international standards on wind & snow load.
- Comprehensive range of mounting rails for varying load profiles.
- Various options of roof attachments like roof hook, L bracket, hanger bolt, shingle flashing etc.

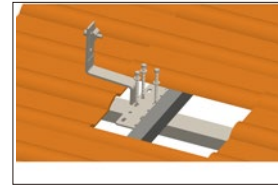


Features

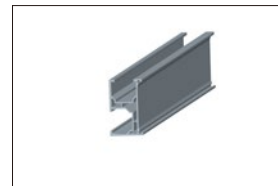
Install site	Pitched roof
Roof cladding	Suitable for most types of cladding
Roof slope	Up to 45°
Building height	Up to 20m
Wind speed	Up to 88m/s(316.8kmh/196.9mph)
Standard	AS/NZ1170.2:2011, JIS C 8955:2011, other international standards
Supporting profile	Minimum two rails supporting each panel
Distance between rail fixings	Depending on load condition, refer to manual
PV module	Framed, unframed
Module orientation	Landscape, portrait
Size of module array	Any layout up to site condition
Material	Anodized aluminum 6005 T5, stainless steel 304, 410
Color	Natural, powder coated
Module widths	Maximum 1.0m
Module lengths	Maximum 2.0m
Warranty	10 years limited warranty, refer to warranty doc



L bracket on tin roof



Tile hook on tile roof



Rail

- Roof structure to be checked as suitable before installation.



End clamp



Inter clamp



Rail splice



Pitched roof



10
Years
Warranty



Framed module



Unframed module



Orientation landscape



Orientation portrait

